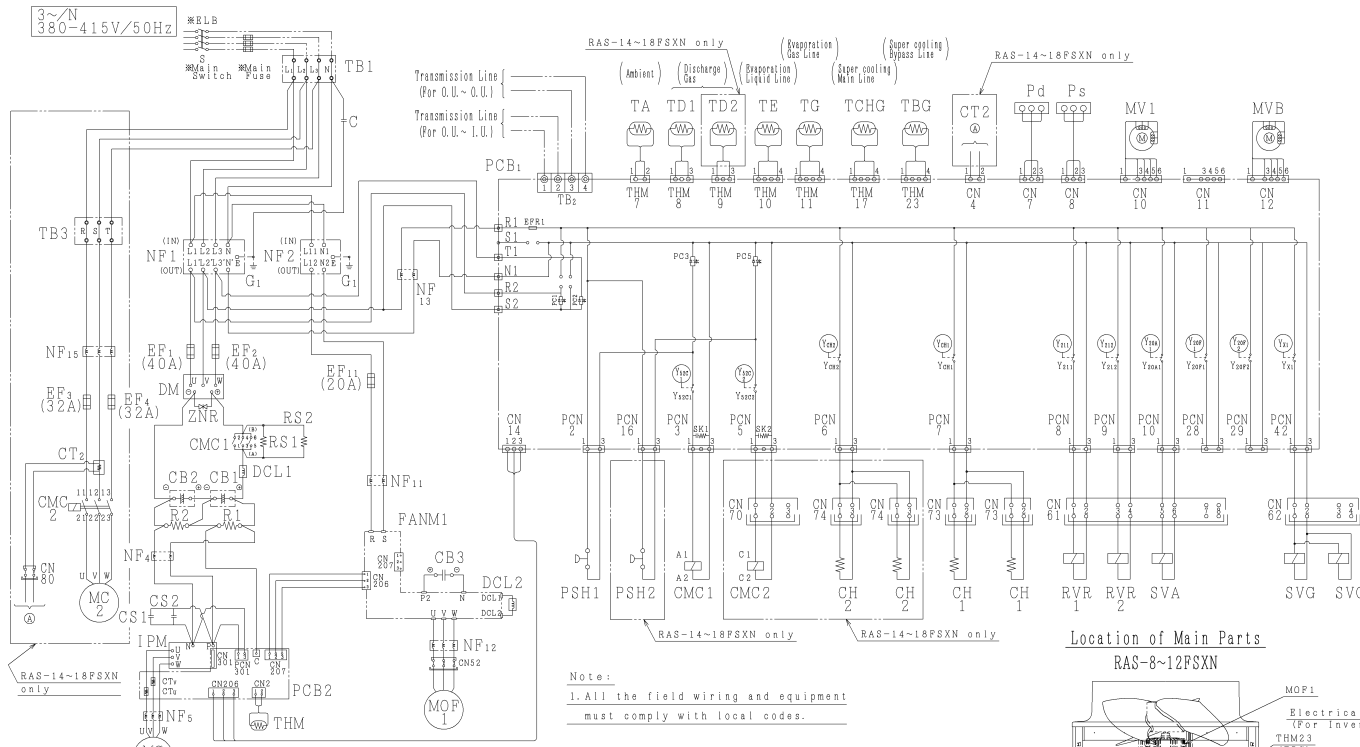


SCHALTPLAN RAS-(8-18)FSXN



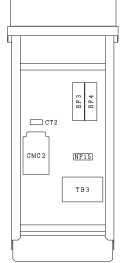
Mark	Name
C	Capacitor
CB1-3	Capacitor
CH1,2	Crankcase Heater
CMC1,2	Contactors for Compressor Motor
CN, PCN	Connector
CS1,2	Capacitor
CT1,2,3	Current Transformer
DCL1,2	Reactor
DM	Diode Module
DSW1-2,10	Dip Switch on PCB
EP1-4,11	Fuse
EP1,2	Fuse on PCB
FANM1	Fan Module
G1	Barth
IPM	Transistor Module
LED1-4	Light Emitting Diode on PCB
MC1,2	Motor for Compressor
MOP1	Motor for Outdoor Fan
MV1,2	Micro-Computer Control Expansion Valve
NF1-15	Noise Filter
PCB1,2	Printed Circuit Board
Pd, s	Sensor for Refrigerant Pressure
PSH1,2	Pressure Switch for Protection
PSW1-3	Push Switch on PCB
R1,2	Resistor
RS1,2	Resistor for Starting
RSW1	Rotary Switch on PCB
RVR1,2	Reversing Valve Relay
SEGI,2	7-Segment on PCB
SVA, s	Solenoid Valve
TB1-3	Terminal Board
THM	Thermistor for Pin Temperature
THM1-23	Thermistor
Y	Auxiliary Relay on PCB
ZNR	Surge Absorber
⊙	Terminals

— : Factory Wiring
 - - - : Barth Wiring
 - · - · : Field Wiring
 * : Field-Supplied

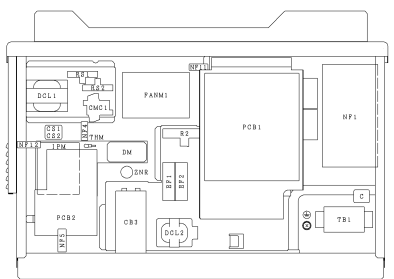
Note:
 1. All the field wiring and equipment must comply with local codes.

Electrical Control Box of Outdoor Unit

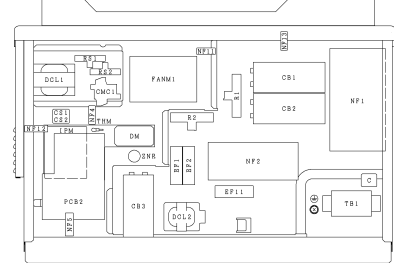
Front side (For Constant)
RAS-14~18FSXN only



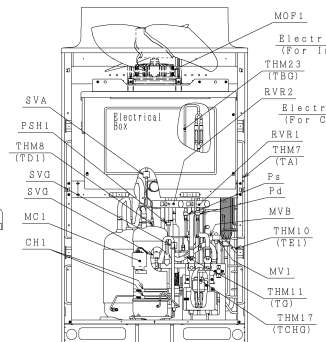
Front side (For Inverter)



The Interior of the Electrical Control Box (For Inverter)



Location of Main Parts RAS-8~12FSXN



Location of Main Parts RAS-14~18FSXN

